



# Embed-a-Tag™

## Concrete Casting ID Tags



- For precast concrete products applications
- Resistant to:
  - Heat: 1000°F (538°C)
  - Chemical
  - Abrasion
  - UV Exposure
- 3" Wide (76mm) X Customized Length
- Metal with laser markable coating

- ◆ Tags mount flush to top, facings, or edges.
- ◆ Use adhesive to hold tag on form during pour OR insert into wet concrete.
- ◆ Curing permanently attaches tag to the casting.
- ◆ Better than chalk that wipes off and paper tags that tear or fall off.
- ◆ Tag remains readable after long term outdoor exposure and will not rust.
- ◆ Compatible with InfoSight's LabeLase® Printers.
- ◆ Preprinted tags are available.



Find out how easy it is to design and print your tags with a LabeLase® Metal Tag Printer & free Producer™ Software.

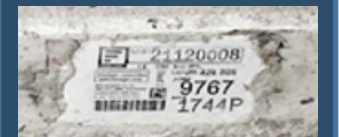


TEST EMBED-A-TAG™ IN YOUR PROCESS—CONTACT US FOR SAMPLES

# Embed-a-Tag™

## Technical Specifications

<b>Industry</b>	Precast/pre-stressed concrete
<b>Typical Customer</b>	Precast concrete plants
<b>Purpose</b>	Durable, weather proof identification for flush mounting on top or edges of precast concrete members
<b>Resistance</b>	<b>Heat:</b> 1000°F (538°C) <b>Chemical:</b> Highly rust resistant Moderate resistance to common chemicals <b>Abrasion:</b> Moderate <b>Ultraviolet:</b> Highly resistant to sunlight and fading
<b>Sizes</b>	<b>Width:</b> 3.0 in (76 mm) <b>Lengths:</b> to customer specification, not less than 1.0 in (25 mm) <b>Typical Length:</b> 6.0 in (152 mm)
<b>Composition</b>	Metal with high contrast laser-markable coatings
<b>Available Forms</b>	Print on-site with one of InfoSight's durable, laser metal tag printers or preprinted by InfoSight
<b>Available Colors</b>	White, colors by special order



Technical specifications are subject to change without notice.  
Embed-a-Tag, Producer, and "We Barcode Difficult Stuff" are trademarks of InfoSight.  
Labelase is a registered trademark of InfoSight.  
Copyright 2020 InfoSight Corporation